

Event Log Dump SD Card

Scientific working for MIRUS Controller

Technologie Institut Medizin GmbH (TIM)
August-Thyssen-Straße 30 | D-56070 Koblenz,
Germany
T.: +49 (0) 261 899 689 00 | info@tim-gmbh.de

CE 0044

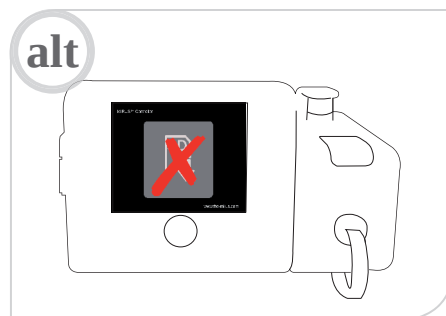
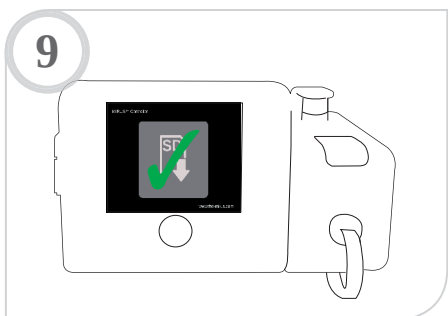
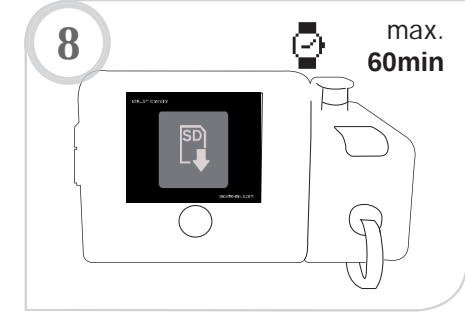
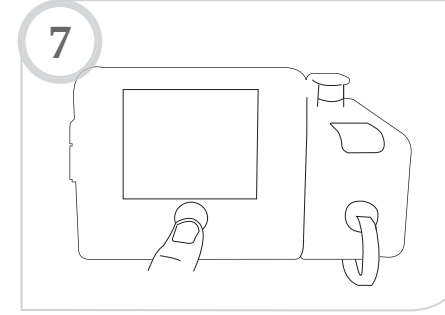
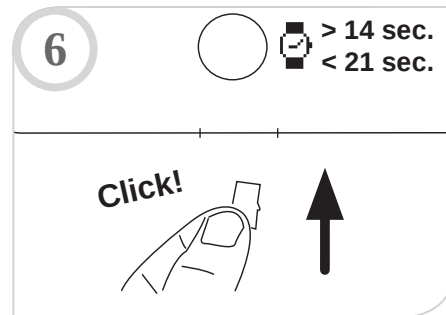
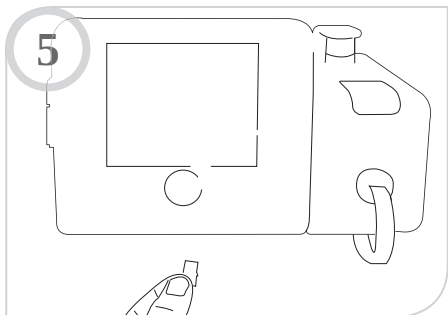
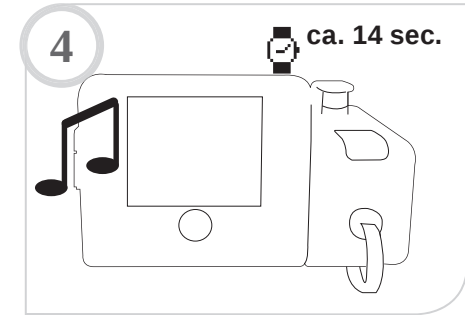
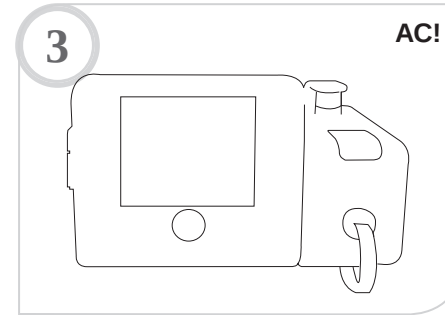
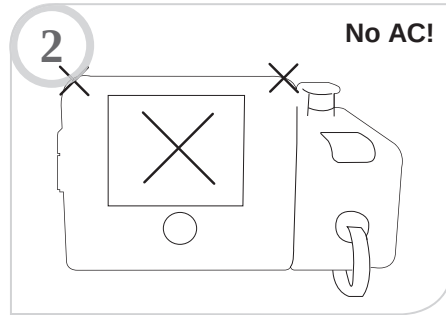
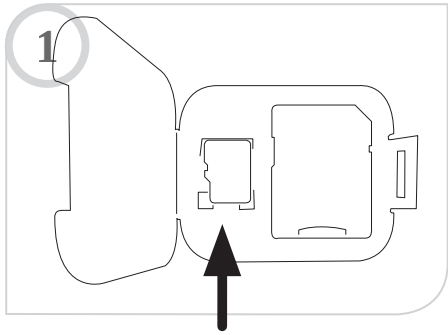
Art.No. MC-01-016
MIRUS Event Log Dump Step by Step | E.00 Page/
Seite/Page/Pagina/Página/Strona 1/2

Step-by-step: MIRUS Event Log Dump / Schritt-für-Schritt-Anleitung:

MIRUS Event Log sichern / Instructions étape par étape: télécharger Event Log MIRUS /
Istruzione passo per passo: per scaricare MIRUS Event Log / Instrucciones paso a paso:
descargar el registro de eventos de MIRUS / Krok po kroku: Zapis dziennika zdarzeń w
Systemie MIRUS.




en	de	fr	it	es	pl
Caution: Read before use.	Achtung: Vor Gebrauch lesen.	Attention: Lisez d'abord ceci.	Attenzione: Leggi questo prima.	Atención: Leer antes de usar.	Uwaga: Przeczytaj przed użyciem.



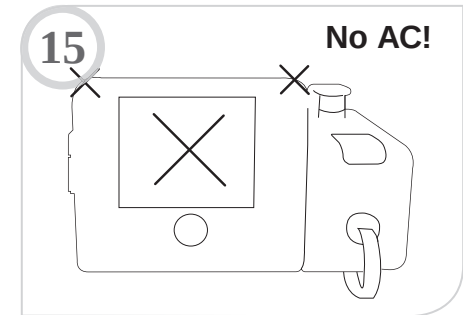
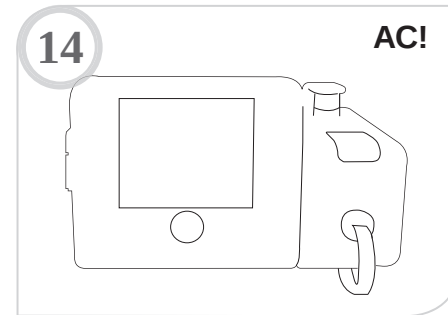
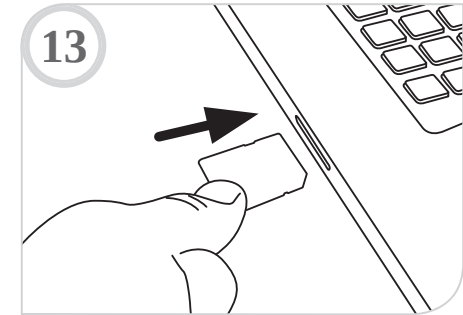
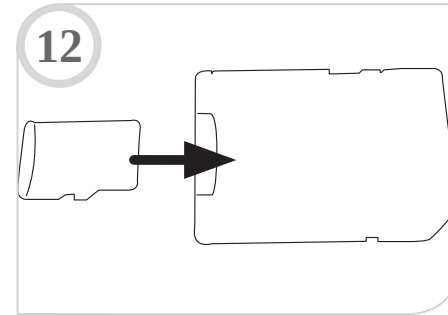
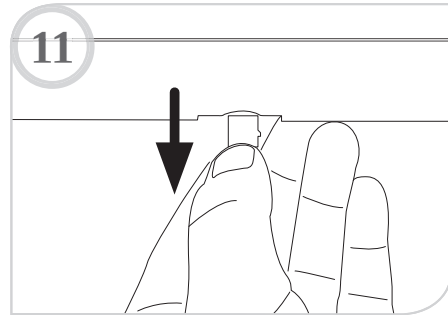
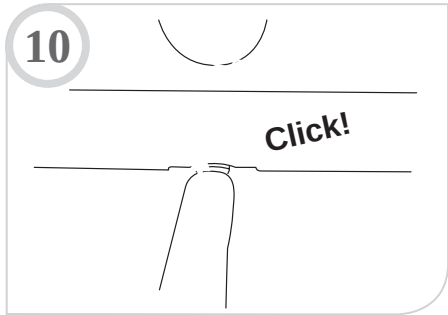
Event Log Dump SD Card

Scientific working for MIRUS Controller

 Technologie Institut Medizin GmbH (TIM)
August-Thyssen-Straße 30 | D-56070 Koblenz,
Germany
T.: +49 (0) 261 899 689 00 | info@tim-gmbh.de

CE 0044

Art.No. MC-01-016
MIRUS Event Log Dump Step by Step | E.00 Page/
Seite/Page/Pagina/Página/Strona 2/2



Zip & Email data to/ Gezippte Daten per E-Mail an/ Envoyer data zip-comprimé à /

Comprimere i dati e invia a e-mail / Datos comprimidos por correo electrónico / Skompresuj i wyślij dane do:

info@tim-gmbh.de